



Ultra flat stage monitor fitted with lightweight coaxial 12" / 1.4" Neodymium drivers. With high power reserves, homogeneous sound distribution and low tendency to feedback, the M 3 is a tool that will greatly simplify a sound engineer's job. Combined with the optional flying bracket, the system can also be used both as a downfill and as a univesal sound system.

PRODUCT SPECIFICATIONS

| | |
|-------------------------------------------|------------------------------------------------------------------|
| Speaker Components | 12" Nd / 1.4" Nd Coaxial |
| Description | Low Profile Monitor |
| Power AES / Peak | 500 W / 1500 W |
| Impedance nominal | 8 Ω |
| SPL 1 W / Peak @ 1m | 98 dB / 133 dB |
| Usable Range | 80 Hz - 19 kHz (- 6 dB) |
| Tuning Frequency excursion minimum | 90 Hz |
| X - Overpoint acoustical | 1,2 kHz |
| Coverage horizontal / vertical | 60° - conical |
| Connectors | 2 x Speakon NL4MP in/out Coding: 1 +/- HiMid, 2 +/- loop thru |
| Handles | 2 x |
| Rigging / Fittings | 2 x M10 |
| Weight | 16 kg |
| Size height x width x depth | 27,4 x 40,0 x 47,0 cm |
| Order No. | 01068 |



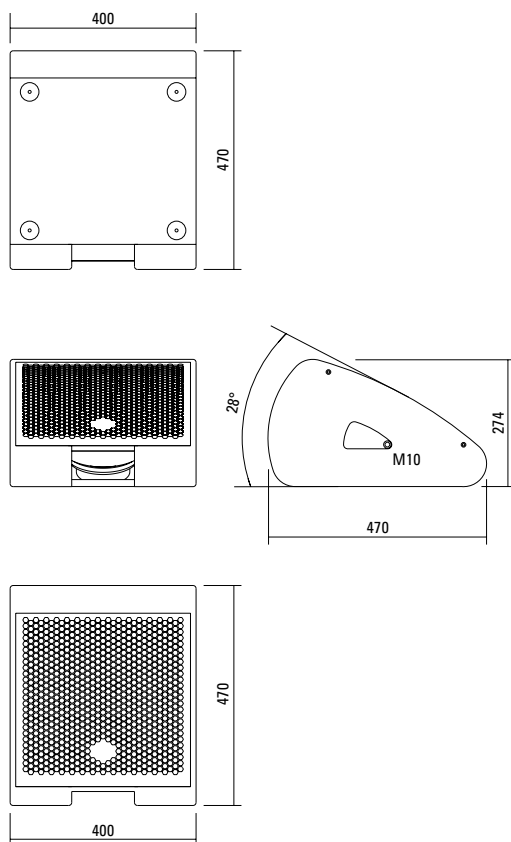
The attractively formed handle cutouts guarantee comfortable handling.



The connectors are good face accessible to the user.

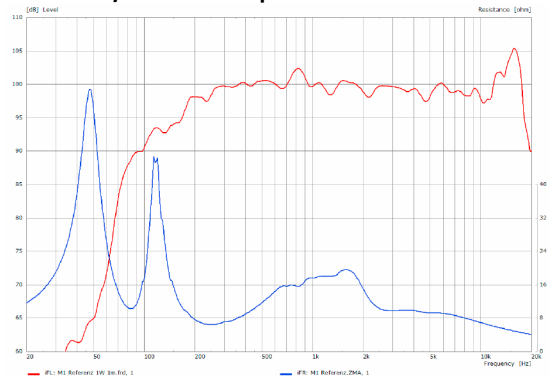


DIMENSIONS

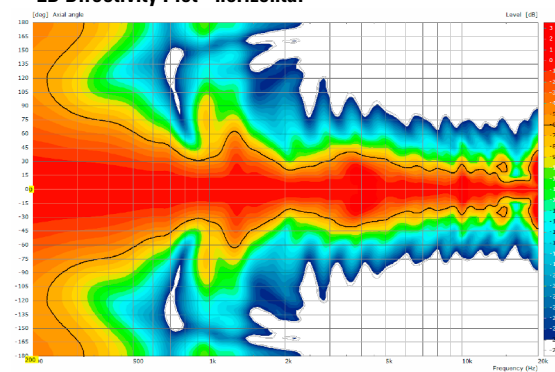


MEASUREMENTS

Sensitivity 1 W @ 1 m + Impedance



2D Directivity Plot - horizontal

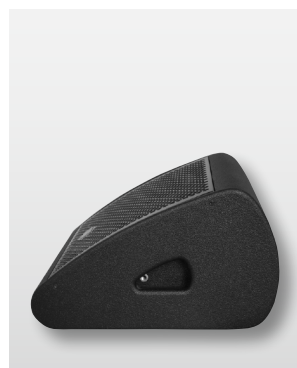
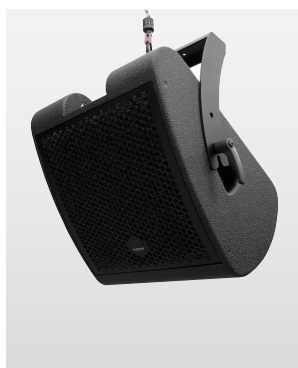


Controller Setups:



<http://www.seeburg.net/en/downloads>

APPLICATIONS



ACCESSORIES M 1

Flying Bracket



for M 1
incl. screws
(per unit: 2 pcs. M10 x 60 adjustable
handle screws)
Order No. **01202**

Handle Screw



for flying brackets, adjustable
M10 x 60
Order No. **08375/60**

Knurled Head Nut



reduction screw for fastening
M10 Pole Mount Adapter (08126)
Order No. **73755**

Pole Mount Adapter



35 mm \varnothing \rightarrow M10 x 16 mm,
M8 x 20 star knob screw
Order No. **08126**
35 mm \varnothing \rightarrow M10 x 16 mm
Order No. **08126/II**

Quick Trigger Clamp



max. load 100 kg
Order No. **01223/100 kg**

Quick Trigger Clamp - small



M10, max. load 20 kg
Order No. **01223/20 kg**

Ring Screw



M10– DIN 580
Order No. **73700** (zincd)
Order No. **73700/sw** (black zincd)

TV Spigot



10 mm internal thread,
28 mm \varnothing
Order No. **08128**

Steel Safety



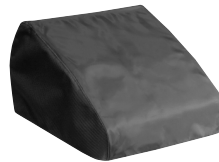
6 mm x 600 mm, black,
max. load 22 kg (BGI 810-3),
quick connector undetachably
Order No. **01376/6**

Chain Fastener



VBS 7 mm
Order No. **01378**

Rain Cover



for M 1
Order No. **01228/outdoor**

Flight Case



for 2 pcs. M 1,
heavy duty, 9 mm birch multiplex,
PVC coated, hinged lid, 6 x recessed
sprung handles, 2 x butterfly catches,
4 x 100 mm blue wheels, 2 pcs. with
brake, stackable, interior lined with felt
Order No. **16015/pro**